



### Hospital box according to EN 60601-1



#### Technical data

Colour: silver anodised  
 Dimensions: Housing exterior 400×110×78mm (W×H×D),  
 mass of holes 380×85×8mm (W×H×Diam.)

#### Application

In areas used for medical purposes in group 0, 1 and 2  
 and installations of a special nature – areas used for medical  
 purposes in accordance to the SN HD 60364-7-710 standard

#### Product features

- tested according to:  
 EN 60601-1 (Medical electrical equipment),  
 SN HD 60364-7-710 (Requirements for premises, rooms  
 and installations of a special nature – areas used for medical  
 purposes),  
 EN 61439-1 (Low-voltage switchgear and controlgear  
 assemblies)
- Protection class IP20
- IP20 socket with hinged cover
- additional potential equalisation
- plug-in and plug-out protection available
- modular accessories available
- aluminium housing with mounting brackets
- corrosion-resistant
- UV-resistant and halogen-free
- resistant to ageing and temperature
- flame retardant

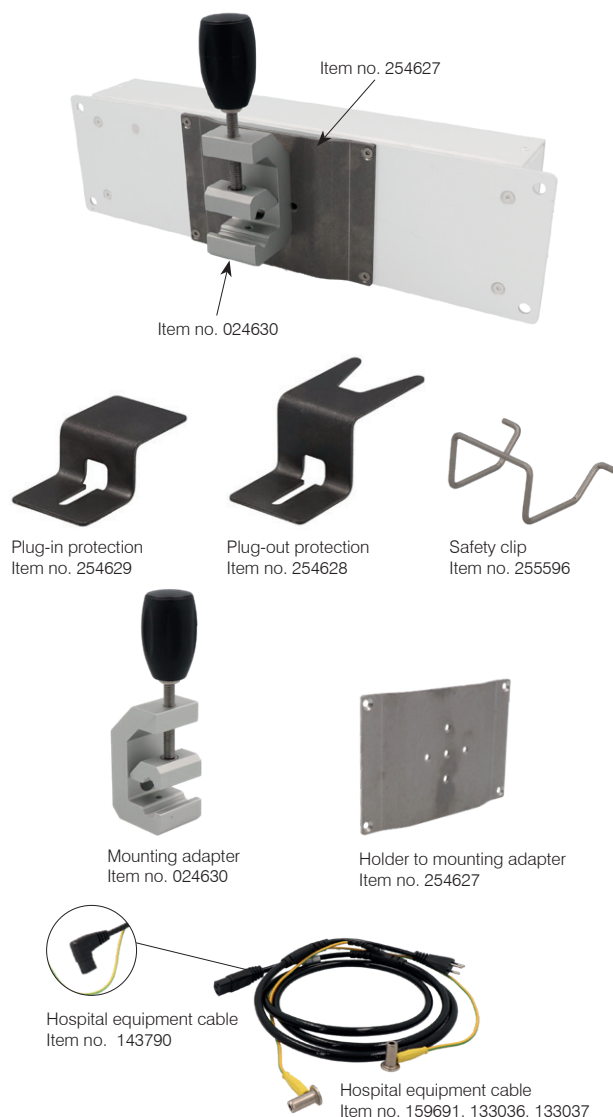
#### Available on request:

- IP20 socket without hinged cover
- IP55 socket with hinged cover

Item no.	Designation
✓ 254431	Hospital box aluminium, 4×T13 (IP20 with hinged cover), 5×Pot. equal., PE+zSPA connected
254432	Hospital box aluminium, 4×T13 (IP20 with hinged cover), 5×Pot. equal., PE+zSPA <b>not</b> connected

Other versions available on request

✓ from stock, offer subject to prior sale



#### Accessories

Item no.	Designation
✓ 159691	Hospital equipment cable 3×1.5 black L=1.5m T12, T113 straight
✓ 133036	Hospital equipment cable 3×1.5 black L=2.5m T12, T113 straight
✓ 133037	Hospital equipment cable 3×1.5 black L=4.5m T12, T113 straight
✓ 143790*	Hospital equipment cable 3×1.5 black L = 4.5m T12, T113 right-angle plug
✓ 255596	Safety clip, pull-out safety device for angled cable plug
✓ 254629	Plug-in protection, IP20
✓ 254628	Plug-out protection, IP20
✓ 024630	Aluminium mounting adapter for hospital profile
✓ 254627	Aluminium holder for hospital box for hospital profile item no. 024630
✓ 031122	UP cover frame size 1, anthracite, IP20
✓ 254046	UP cover frame size 1, with hinged cover, anthracite, IP20

\* in combination with item no.255596

### Hospital equipment cord set



#### Technical data

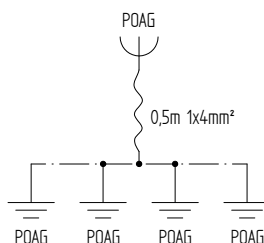
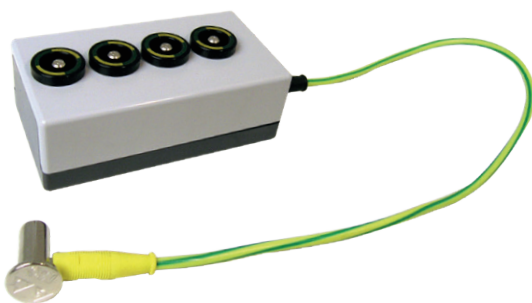
Operating voltage:	450 / 750 V
Test voltage:	2'500 V / 50 Hz
Temperature range:	-40° C to +90° C
Minimum bend radius:	10 × D (D = cable diameter)
External diameter:	10.5 mm
Strand/casing:	EPR rubber / polyether / PUR, black RAL 9005
T12 plug:	vulcanised onto the cable
Equipment plug T113:	vulcanised onto the cable
Branch wires:	vulcanised onto the cable
MC angle plug:	type POAG-KBT 6 DIN, hand-assembled

#### Product features

- tested in accordance with EN 60601-1 (medical electrical equipment)
- vulcanised connectors on both sides (Schuko / T113)
- all-round vulcanised branch lines
- resistant double polyurethane casing (polyether / PUR)
- two functions in one cable
- concentrically fitted potential wire
- no concealed slots / notches
- exceptionally flexible round cable
- maximum flexibility grounding wire 4 mm<sup>2</sup>
- very short cleaning time
- 100% free of silicone and latex

Item no.	Designation
✓ 133036	GIFAS hospital equipment cord set, black, 2.5m 3×1.5mm <sup>2</sup> + 4mm <sup>2</sup> , POAG, plug T12, connector T113
✓ 133037	GIFAS hospital equipment cord set, black, 4.5m 3×1.5mm <sup>2</sup> + 4mm <sup>2</sup> , POAG, plug T12, connector T113
✓ 133038	GIFAS hospital equipment cord set, black, 2.7m 3×1.5mm <sup>2</sup> + 4mm <sup>2</sup> , POAG, plug T12, for direct connection
✓ 133039	GIFAS hospital equipment cord set, black, 4.7m 3×1.5mm <sup>2</sup> + 4mm <sup>2</sup> , POAG, plug T12, for direct connection
✓ 195544	GIFAS hospital equipment cord set, black, 4.5m 3×1.5mm <sup>2</sup> + 4mm <sup>2</sup> , POAG, plug T23, connector C19
✓ 195545	GIFAS hospital equipment cord set, black, 4.7m 3×1.5mm <sup>2</sup> + 4mm <sup>2</sup> , POAG, plug T23, for direct connection
✓ 860476	GIFAS hospital equipment cord set, PUR 3×1.5mm <sup>2</sup> , black, L = 4.5m with PE 4mm <sup>2</sup> plug type Schuko, angled, equipment plug type 113

### Potential distributor box



#### Potential distributor box

Item no.	Designation
✓ 072443	Potential distributor box 4×MC-POAG, 0.5m connector w/POAG

Other versions on request.

✓ from stock, offer subject to prior sale

2/2